

# PRODUCTS EXHIBITION

产 · 品 · 展 · 示

## 特高压系列 / Ultra-high voltage switchgears



ZF27-1100 气体绝缘金属封闭开关设备 (GIS)  
ZF27-1100 gas-insulated metal-enclosed switchgear (GIS)



LW55-800 罐式断路器  
LW55-800 dead tank circuit breaker



ZF27-800 气体绝缘金属封闭开关设备 (GIS)  
ZF27-800 gas-insulated metal-enclosed switchgear (GIS)





EPG-1100 高压交流接地开关  
EPG-1100 high voltage AC earthing switch



GW27-1100 高压交流隔离开关  
GW27-1100 high voltage AC disconnector



GW27-800 高压交流隔离开关  
GW27-800 high voltage AC disconnector

# PRODUCTS EXHIBITION

产 · 品 · 展 · 示

## 组合电器系列

### Composite apparatus

40.5 kV ~ 1100kV 气体绝缘金属封闭开关设备 (GIS)

40.5kV ~ 1100kV gas-insulated metal-enclosed switchgear (GIS)

252kV 复合电器

252kV compass of dead tank





ZF27-500 气体绝缘金属封闭开关设备 (GIS)  
ZF27-500 gas-insulated metal-enclosed switchgear (GIS)



ZF11-252 气体绝缘金属封闭开关设备 (GIS)  
ZF11-252 gas-insulated metal-enclosed switchgear (GIS)



ZF12-126 气体绝缘金属封闭开关设备 (GIS)  
ZF12-126 gas-insulated metal-enclosed switchgear (GIS)



ZF12B-126 气体绝缘金属封闭开关设备 (GIS)  
ZF12B-126 gas-insulated metal-enclosed switchgear (GIS)



ZF5T-126 气体绝缘金属封闭开关设备 (GIS)  
ZF5T-126 gas-insulated metal-enclosed switchgear (GIS)



ZHW1-252 复合电器  
ZHW1-252 compass of dead tank



ZFN13-40.5 GIS

# PRODUCTS EXHIBITION

产 · 品 · 展 · 示

## 断路器系列 / **Circuit breaker**

800/1100kV 断路器

800/1100kV circuit breaker

252kV~800kV 罐式断路器

252kV~800kV dead tank circuit breaker

252kV~550kV 敞开式断路器，配液压机构

252kV~550kV live tank circuit breaker with hydraulic mechanism

40.5kV~252kV 敞开式断路器，配弹簧机构

40.5kV~252kV live tank circuit breaker with spring mechanism

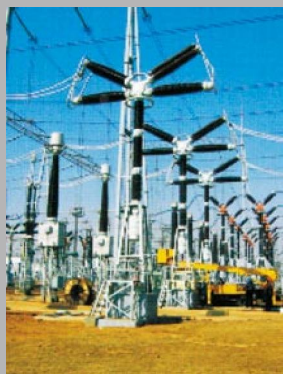
40.5kV 真空断路器

40.5kV vacuum circuit breaker





LW55-252/363/550  
罐式断路器  
LW55-252/363/550  
dead tank circuit breaker



LW10B-252/363/550  
断路器，配液压机构  
LW10B-252/363/550 circuit breaker  
with hydraulic mechanism



LW35-252 断路器  
LW35-252 circuit breaker



LW35S-252 断路器  
LW35S-252 circuit breaker



LW35-72.5/126/145 断路器  
LW35-72.5/126/145 circuit breaker



LW34-40.5 SF<sub>6</sub>断路器带内置电流互感器  
LW34-40.5 SF<sub>6</sub> circuit breaker with inside CT



ZW30-40.5 真空断路器  
ZW30-40.5 vacuum circuit breaker

# PRODUCTS EXHIBITION

产 · 品 · 展 · 示

## 隔离开关和接地开关系列

### Disconnecter and earthing switch

252kV~1100kV隔离开关 (GW27 系列)

252kV~1100kV disconnector (GW27 series)

126kV~550kV 隔离开关 (GW16B/GW17B系列)

126kV~550kV disconnector (GW16B/GW17Bseries)

252kV~550kV 隔离开关 (GW28/GW29 系列)

252kV~550kV disconnector (GW28/GW29 series)

252kV~550kV隔离开关 (GW46系列)

252kV~550kV disconnector (GW46 series)

40.5kV~252kV 隔离开关(GW7 系列)

40.5kV~252kV disconnector (GW7 series)

40.5kV~252kV 隔离开关(GW4 系列)

40.5kV~252kV disconnector (GW4 series)

40.5kV~145kV隔离开关 (GW5 系列)

40.5kV~145kV disconnector (GW5 series)

40.5kV~126kV 中性点隔离开关 (GW8/GW13系列)

40.5kV~126kV Neutral point disconnector (GW8/GW13 series)

40.5kV~1100kV 接地开关

40.5kV~1100kV earthing switch





GW27型系列高压隔离开关  
 额定电压：252kV/550kV/800kV/1100kV  
 GW27 series of disconnectors  
 Rated voltage: 252kV/550kV/800kV/1100kV



GW16B/17B型系列高压隔离开关  
 额定电压：126kV/252kV/363kV/550kV  
 GW16/17B series of disconnectors  
 Rated voltage: 126kV/252kV/363kV/550kV



GW7型系列高压隔离开关  
 额定电压：40.5kV/72.5kV/126kV/  
 145kV/252kV  
 GW7 series of disconnectors  
 Rated voltage: 40.5kV/72.5kV/126kV/145kV/252kV



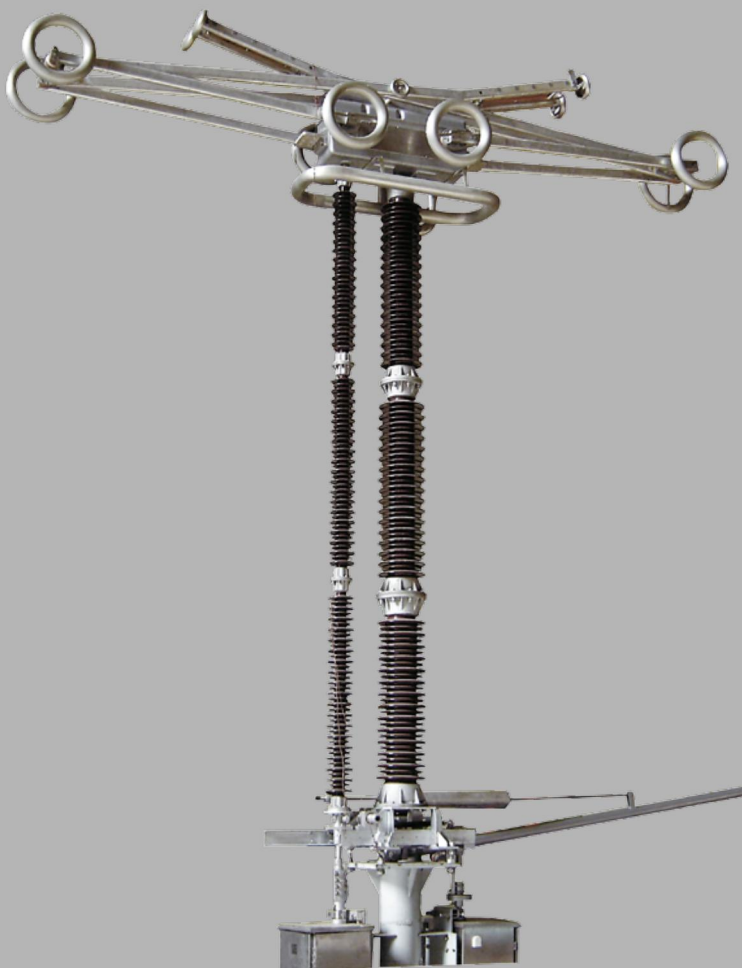
GW28/29型系列高压隔离开关  
 额定电压：252kV/363kV/550kV  
 GW28/29 series of disconnectors  
 Rated voltage: 252kV/363kV/550kV



GW4型系列隔离开关  
 额定电压：40.5kV/72.5kV/126kV/145kV/252kV  
 GW4 series of disconnectors  
 Rated voltage: 40.5kV/72.5kV/126kV/145kV/252kV

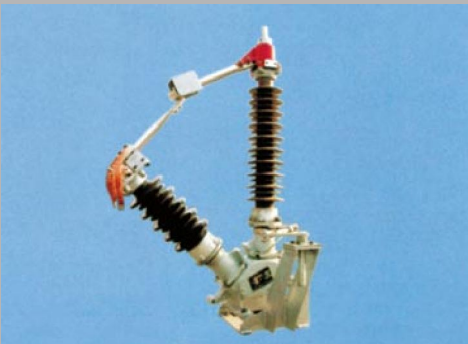


GW5型系列高压隔离开关  
 额定电压：40.5kV/126kV/145kV  
 GW5 series of disconnectors  
 Rated voltage: 40.5kV/126kV/145kV



GW46型系列隔离开关  
 额定电压：252kV/363kV/550kV  
 GW46 series of disconnector  
 Rated voltage: 252kV/363kV/550kV





GW13系列中性点隔离开关  
 额定电压：72.5kV/126kV  
 GW13 series of neutral-point disconnector  
 Rated voltage: 72.5kV/126kV



GW5Z系列中性点隔离开关  
 额定电压：40.5kV/72.5kV/126kV  
 GW5Z series of neutral-point disconnector  
 Rated voltage: 40.5kV/72.5kV/126kV



GW8系列中性点隔离开关  
 额定电压：40.5kV/72.5kV/126kV  
 GW8 series of neutral-point disconnector  
 Rated voltage: 40.5kV/72.5kV/126kV



JW6型系列接地开关  
 额定电压：126kV/252kV  
 JW6 series of earthing switch  
 Rated voltage: 126kV/252kV



JW8型系列接地开关  
 额定电压：252kV/363kV/550kV/800kV  
 Rated voltage: 252kV/363kV/550kV/800kV

# PRODUCTS EXHIBITION

产 · 品 · 展 · 示

## 其它产品 Other products



LVQB系列SF<sub>6</sub>电流互感器  
额定电压: 40.5/72.5/126/252/550kV  
LVQB series of SF<sub>6</sub> current transformer  
Rated voltage: 40.5/72.5/126/252/550kV



互感器试验大厅  
Transformer testing hall



JDQX系列SF<sub>6</sub>电压互感器  
额定电压: 40.5/72.5/126/252/550kV  
JDQX series of SF<sub>6</sub> potential transformer  
Rated voltage: 40.5/72.5/126/252/550kV



JDQX-110W<sub>2</sub>型  
SF<sub>6</sub>电压互感器  
JDQX-110W<sub>2</sub>  
SF<sub>6</sub> voltage transformer



LGBJ-35型  
干式电流互感器  
LGBJ-35  
dry current transformer



LGBJ-110型  
干式电流互感器  
LGBJ-110  
dry current transformer



LGBJ-220型  
干式电流互感器  
LGBJ-220  
dry current transformer



JDCF-110型  
油式电压互感器  
JDCF-110  
oil voltage transformer



JDCF-220型  
油式电压互感器  
JDCF-220  
oil voltage transformer



LB6-110型  
油式电流互感器  
LB6-110  
oil current transformer



LB7-220型  
油式电流互感器  
LB7-220  
oil current transformer





KYN28A-12型  
铠装移开式金属封闭开关柜  
KYN28A-12 metal-clad switch cabinet



KYN72-40.5 (Z) 型  
铠装移开式金属封闭开关柜  
KYN72-40.5 (Z) metal-clad switch cabinet



KYN61-40.5型  
铠装移开式金属封闭开关柜  
KYN61-40.5 metal-clad switch cabinet



XGN2-12型  
箱型固定式金属封闭开关柜  
XGN2-12  
box fixed metal-enclosed switch cabinet



XGN17-40.5 (Z) 型  
箱型固定式金属封闭开关柜  
XGN17-40.5 (Z)  
box fixed metal-enclosed switch cabinet



MNS型低压抽出式开关柜  
MNS low voltage draw-out  
switch cabinet



GGD型低压抽出式开关柜  
GGD low voltage draw-out  
switch cabinet



预装组合箱式变电站YB  
Installed combination box-type  
substation YB